

1495



UNIVERSITY OF  
ABERDEEN

# YOUR FUTURE IN focus

「POSTGRADUATE」  
「GUIDE 2019」



THE  TIMES  
THE SUNDAY TIMES

GOOD  
UNIVERSITY  
GUIDE  
2019

SCOTTISH  
UNIVERSITY  
OF THE YEAR

## CONTENTS

- 2 Introduction
- 6 International study
- 14 Flexible learning
- 16 Notable staff and Alumni
- 20 Aberdeen
- 30 Postgraduate taught
- 46 Postgraduate research
- 58 Enriching your studies
- 62 Careers
- 66 Finance and scholarships
- 68 Accommodation
- 70 Facilities
- 78 Course index

### WHAT DO YOU ENJOY MOST ABOUT LIVING AND STUDYING IN ABERDEEN?

“The diversity of people you can meet; people with different cultural backgrounds and experiences that you can learn from. Furthermore, apart from the studies themselves, there is an opportunity to develop your communication and time management skills while undertaking part-time employment. Moreover, the city has a rich history with ancient buildings, museums and castles to visit, where you can take a step back in time. Aberdeen also provides a gateway to visit the North of Scotland and some beautiful landscapes.”

*Felisberto Muchapa*  
MSc Oil and Gas  
Enterprise Management





# WELCOME

Aberdeen is the fifth oldest university in the UK but we have an outlook that is truly twenty-first century. We are ranked in the world's top 200 universities, with a reputation for world-leading research which attracts outstanding students and academics. Over the last 500 years we have been associated with five Nobel Prize winners, and our modern multinational student community benefits from the latest programmes and facilities.

From 1495 to today, one thing has remained constant: life changing opportunities for the students who pass through our doors.

## History

**Since 1495, we have offered life changing opportunities for all of our students.**

Over the centuries, our students, alumni and staff have made outstanding contributions to public life, science, business, politics, religion and the arts.

Medicine has been taught at the University since the beginning of the 16th century, when the first ever Chair of Medicine in the English speaking world was established. Other key areas of teaching at the University centred on law, arts and theology. Many significant developments have taken place over the centuries, including the active encouragement of women into Higher Education in the 20th Century. Responding to change has always been a part of our history and key to our ongoing development and progress as a leading international educational provider.

We never stop growing and developing as a university and it is our challenge to you, to join us and become part of the next chapter in history.

EST.  
1495



# KEY FACTS

## A TOP 30 UK UNIVERSITY

The Complete University Guide 2019



Aberdeen is ranked  
**SCOTLAND'S SAFEST CITY**

Unbroken Britain Survey, May 2018  
Provident Financial



# 93%

of all postgraduate  
graduates went on  
to **WORK AND/OR  
FURTHER STUDY**

Based on sample available to work –  
DHLE survey, HESA 2018.



### IMPACTFUL

85% of all research  
submissions were rated  
**'OUTSTANDING'** or  
**'VERY CONSIDERABLE'**  
for impact

2014 REF results



# 75%

of the University's  
research is  
ranked as either  
**INTERNATIONALLY  
EXCELLENT** or  
**WORLD LEADING**

2014 REF results

# An international university

We have a long tradition of welcoming both international students and staff to Aberdeen. As one of the UK's most internationally diverse universities, we are home to a student population of around 14,000 and a dynamic international community of students drawn from over 130 different countries. You will be learning in a truly international and diverse environment.

CURRENTLY  
we have students  
from over  
**130**  
COUNTRIES



*Susmita*  
India

DID YOU KNOW?  
We have a campus in Qatar.  
For more information,  
visit [abdn.ac.uk/qatar](http://abdn.ac.uk/qatar)  
We also have an alliance with  
Curtin University Australia.

*Ben*  
United Kingdom



*Adesola*  
Nigeria



*Yafan*  
China

*Cara*  
United Kingdom





# International reach

PLEASE NOTE

This map is for guidance only and should not be taken as a definitive or exhaustive representation of our student body.



## CLOSER THAN YOU THINK

The University of Aberdeen is closer than you think. Regular trains link Aberdeen to key hubs within the UK, including Glasgow, Edinburgh, Manchester and London. A variety of domestic and international flights make Aberdeen easily reachable, wherever you're travelling from in the world.

- 1.5h** flight from London
- 1.25h** flight from Manchester
- 55m** flight from Newcastle
- 2.5h** train from Glasgow
- 2.5h** train from Edinburgh
- 1.5h** flight to Amsterdam
- 2h** flight to Paris

**Over 30%**  
of our Postgraduate  
**STUDENTS ORIGINATED**  
**FROM OUTSIDE OF**  
**THE UK in 2017/18**



# International student support



## MEET YOUR INTERNATIONAL OFFICER

Our International Officers travel around the world meeting and advising prospective students. Each of our International Officers has a dedicated region and can offer specialised advice and guidance to our international applicants. To find out where they are visiting, check: [abdn.ac.uk/my-country](http://abdn.ac.uk/my-country)

## ENGLISH LANGUAGE SUPPORT

As a future student, you'll be offered free English language support sessions. You'll receive four 15-minute Skype calls from one of our current students, allowing you to practise your English in preparation for your English language testing, such as IELTS or TOEFL. It also gives you the chance to find out more about student life in Aberdeen.

## INTERNATIONAL CENTRE

The International Centre is designed to help students fully integrate into life in Aberdeen. Our two day new student orientation helps students settle in by providing workshops on everything from finance and safety, to using the National Health Service (NHS) and working in Scotland. The International Centre also hosts events and activities throughout the year including language groups, international peer groups, trips across Scotland, and international events such as Chinese New Year and American Thanksgiving.

## INTERNATIONAL STUDENT ADVISORS

Once you have arrived in Aberdeen, our International student advisors can provide guidance on many aspects of international student life, including specialist advice on visa and immigration matters.



# Preparing for studying overseas

## ENGLISH LANGUAGE REQUIREMENTS

Prospective students whose native language is not English need to meet the University's language requirements before they can start their studies. For more information: [abdn.ac.uk/international/english-requirements](http://abdn.ac.uk/international/english-requirements)

Students who do not meet the requirements can make use of the University's Language Centre, which offers a variety of English language programmes, including pre-sessional courses for offer holders.

## FUNDING

Students who require a visa to study in Scotland need to show evidence that they have sufficient funds to maintain themselves without earnings from work whilst studying. In addition to tuition fees, students require a further £1015 per month to cover their living costs. As part of your Tier 4 visa application students are also required to pay a health surcharge in order to have access to the National Health Service (NHS). For further information on this, please visit: [abdn.ac.uk/study/international](http://abdn.ac.uk/study/international)



## ATAS

Please note that overseas applicants for some science, engineering or technology disciplines may require an Academic Technology Approval Scheme (ATAS) certificate. The ATAS certificate must be obtained before applying for a student Entry Clearance or VISA. You can submit an ATAS application up to six months before the programme start date, even if the offer is still conditional. [gov.uk/academic/technology/approval/scheme](http://gov.uk/academic/technology/approval/scheme)

## YOUR VISA

Most international students require a Tier 4 visa to study in the UK. You can find out more about whether or not you require a visa by visiting the UK Government website at: [gov.uk/check-uk-visa](http://gov.uk/check-uk-visa)

### WHY I CHOSE THE UNIVERSITY OF ABERDEEN

“Firstly, the people. They are the politest, kindest and most helpful human beings I have ever met in my life. I love the freedom that Aberdeen provides. The curriculum is scientifically designed to promote inter-disciplinary learning which offers students like me the best possible chance of a successful career, alongside the fact that the University works closely with industry. Beyond all this, the university is known for its history, diversity and charitable giving.”

*Thejus Hari*  
MSc Petroleum Engineering





FLEXIBLE LEARNING  
Choose the way you learn

# Choose the way you learn

One of the most appealing aspects of postgraduate study is that it is more accessible to a wider range of individuals now than ever before; individuals of all ages, from all backgrounds, at various stages in their life and career.

Our taught and research degree programmes attract recent graduates moving straight into postgraduate study, mid-career professionals returning to advance or change their careers and working parents returning to education. Whatever your situation, we have the support mechanisms in place to ensure your postgraduate study is a success.



## SHORT COURSES

Many of our degree programmes offer the option to study individual courses from that degree. This can be advantageous to those looking to further their educational knowledge in a specific area. A list of these courses can be found on page 43.



## FULL-TIME

Postgraduate programmes range from a duration of one year, to three years depending on level of study. Specific programme durations can be found online.

## PART-TIME

Part-time study is available for all research degrees and for a significant number of our taught degrees.

## ONLINE LEARNING

We offer a growing number of online programmes designed to give you all the practical advantages of fitting your learning around your location, work and personal commitments. [abdn.ac.uk/online](http://abdn.ac.uk/online)



## JANUARY & SEPTEMBER START DATES

We understand that many of our students require more flexibility when starting a postgraduate qualification – this can be due to career plans, employer constraints or even down to immigration and visa legislation. Please visit [abdn.ac.uk/january](http://abdn.ac.uk/january) to find out if your programme offers a January intake.

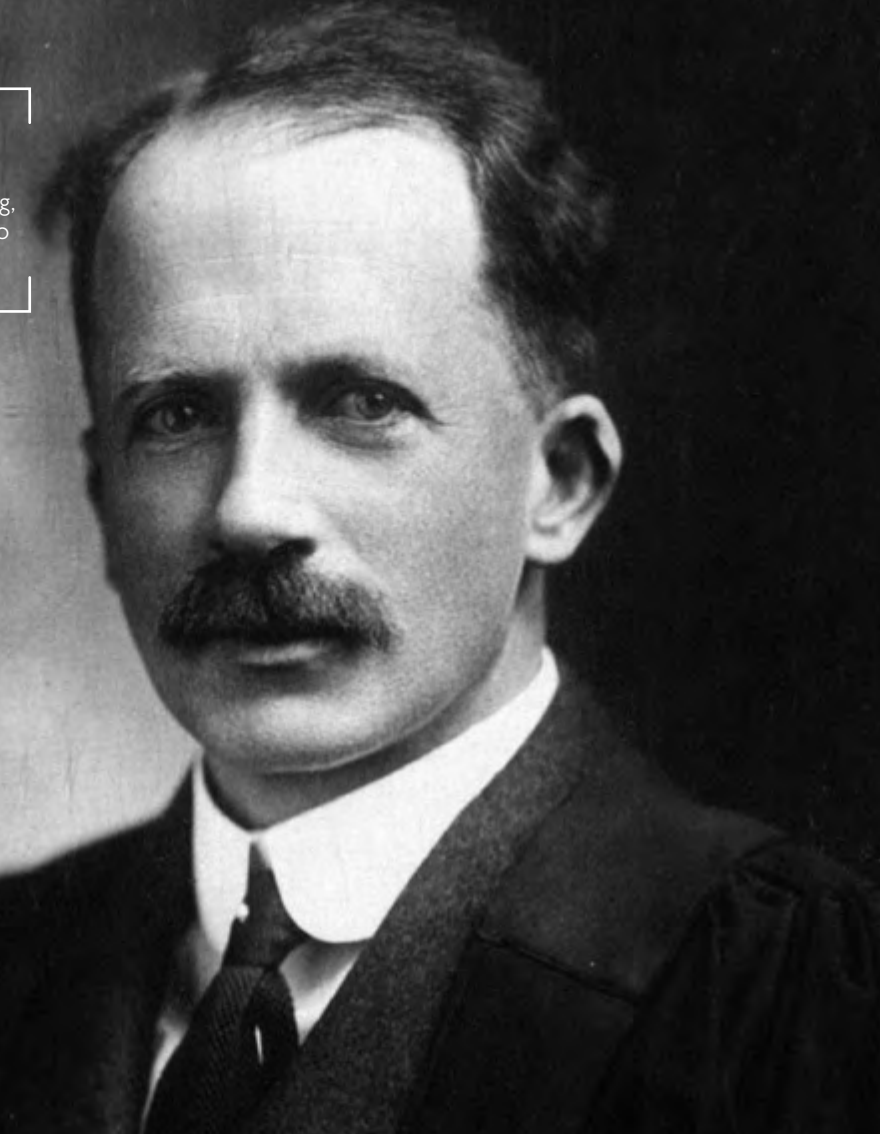


NOTABLE STAFF AND ALUMNI  
Our legends

**NOBEL PRIZE WINNER**

*J J R Macleod (1923)*

Professor J J R Macleod,  
jointly with Frederick Banting,  
for the research which led to  
the development of insulin  
as a treatment for diabetes



# Our legends

Each year we challenge our students to become our future history, re-write the story of the University and aspire to greatness. We are exceptionally proud of our Alumni and staff for the major changes they have made to the world over the centuries. We will give you the tools and encouragement to be a success and we invite you to become a legend in your own right.

**NOBEL PRIZE WINNER**

*Sir George Paget Thomson (1937)*

Professor of Natural Philosophy (Physics) at Aberdeen from 1922-1930, together with the American physicist C J Davisson, "for their (independent) experimental discovery of the diffraction of electrons by crystals"



**NOBEL PRIZE WINNER**

*Frederick Soddy (1921)*

Professor of Chemistry at the University of Aberdeen from 1914-1919, for his work on radioactivity and isotopes



**NOBEL PRIZE WINNER**

*Lord Boyd Orr (1947)*

Director of the Rowett Institute and Professor of Agriculture from 1942 to 1945, in recognition of his contribution to the worldwide fight against hunger



**THE LIFE SAVER**

*John Mallard OBE*

Professor John Mallard led the team which built the first whole body MRI scanner



**THE GLOBAL  
BUSINESS LEADER**

*Martin Gilbert*

Co-founder and Chief Executive  
of Aberdeen Asset Management



**THE OLYMPIAN**

*Neil Fachie MBE*

Gold and Silver  
Medal winning  
Paralympian

**THE LEADING LAWYER**

*Hon. A. Gail Prudenti*

Distinguished New York Judge, served  
as Chief Administrative Judge of the  
Courts of New York State and presiding  
justice of the New York Supreme Court



**THE NOVELIST**

*Nan Shepherd*

Novelist and Poet,  
the first non-Royal  
female to appear  
on a Royal Bank of  
Scotland banknote



**THE ENTREPRENEUR**

*Ben Irawani*

Managing Director,  
Monkey Bars Aberdeen Ltd,  
Co-founder of Porter's Gin



**THE ACTRESS**

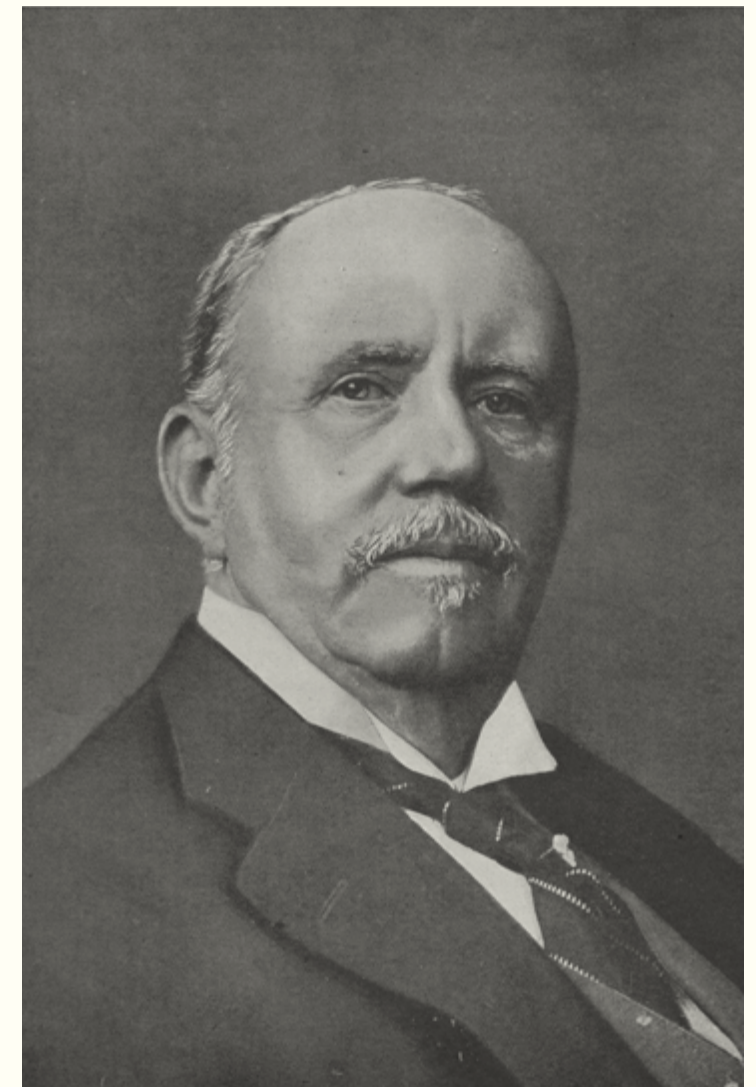
*Laura Main*

"The University of Aberdeen  
allowed me to not only  
further my academic  
education but also to gain  
invaluable experience on  
stage, performing in both the  
Musical Theatre Society and  
many student shows. I have  
lots of happy memories of  
those experiences and made  
good friends too."

**THE BANKING FOUNDER**

*Sir Thomas Sutherland*

Business leader, entrepreneur  
and founder of HSBC





ABERDEEN  
Bright lights, small city

# Bright lights, small city

Packed with potential, Aberdeen, known as the 'silver city,' is full of surprises, boasting international sophistication and old-world intimacy. It remains a key UK business hub and offers a range of cultural and leisure entertainment for all.





**ABERDEEN**  
Bright lights, small city

### CULTURE AND ENTERTAINMENT

With a number of art galleries, historic theatres, museums and libraries, Aberdeen is steeped in culture. The city's venues host hundreds of theatrical productions a year including ballet, opera and drama, as well as the popular Aberdeen Student Show, which raises significant sums for charity. For music lovers, local venues such as The Lemon Tree, AECC/TECA and Beach Ballroom, often have famous musicians performing.

### EATING AND DRINKING

From serving great local produce such as beef, fish and shellfish, to traditionally cooked international dishes, the city has a huge variety of restaurants and cafes from which to choose. It also has more than 100 bars and clubs ranging from popular student hang-outs and cosy traditional pubs, to wine and cocktail venues and clubs with DJs and live music.

### SHOPPING

Whether in the city's shopping malls, numerous retail parks, or in the bustling city centre itself, shoppers can find high street and designer stores, as well as quirky independent shops and international street markets.



City centre to airport in 20mins



Happiest city in the UK\*



Aberdeen is Scotland's safest city\*\*



Scotland's 3rd largest city



From top left clockwise:  
The David Welch Winter Gardens, Foodstory, Mackie's 19.2 Ice Cream Parlour and Bon Accord Shopping Centre.

\*Source: PWC  
\*\*Source: Unbroken Britain Survey, May 2018 - Provident Financial.  
Some images courtesy of Visit Aberdeenshire.



From top left clockwise:  
River Dee, The Academy  
Shopping Centre, The Green,  
Cafe 52, St Machar Bar,  
Books and Beans and  
Seaton Park.



Some images  
courtesy of Visit  
Aberdeenshire.





ABERDEEN  
On our doorstep

# On our doorstep



From top left clockwise:  
Loch Muick, Balmedie  
Beach, Balmoral Castle,  
Dunnottar Castle and  
Glenshee Ski Resort.



## THE GREAT OUTDOORS

Enjoy your studies in an area surrounded by stunning countryside, breath-taking coastlines and towering mountains. Ideally situated, with Britain's largest National Park to the west and miles of coastlines and sandy beaches to the east, Aberdeenshire provides endless activities and opportunities.

The city and shire also offer a great selection of outdoor activities including surfing, hillwalking, skiing, snowboarding and equestrian pursuits. Also within easy driving distance from the city are impressive castles and historic monuments. One of our most well-known castles, Dunnottar Castle, partly inspired Disney Pixar's animation Brave. [visitscotland.com](http://visitscotland.com)





16.3m from Aberdeen

CASTLE FRASER

KIRKHILL FOREST



ABERDEEN AIRPORT

Scots town Rd



CAMPUS

BRIDGE OF DON



# Mapping out Aberdeen

Straik Rd

A944

CRUICKSHANK BOTANIC GARDEN



THE LEMON TREE PERFORMING ARTS



ABERDEEN SPORTS VILLAGE



BEACH

ABERDEEN ART GALLERY



ABERDEEN MUSIC HALL



BELMONT FILMHOUSE



TRAIN STATION



UNION SQUARE SHOPPING CENTRE



CRATHES CASTLE

17.5m from Aberdeen

HIS MAJESTY'S THEATRE



DUNNOTTAR CASTLE



26m from Aberdeen

THE FALLS OF FEUGH



Chapel of Stoneywood

B9119

Countesswells Rd

Baillieswells Rd

N Deeside Rd

Inchgarth Rd

B9077

A90

A90





POSTGRADUATE TAUGHT  
Taught postgraduate degrees

# Taught postgraduate degrees

## DIVERSE, CROSS-DISCIPLINE OPTIONS

Our range of cross-discipline and specialist taught Masters and research degrees give students the skills they need to excel in their chosen area of interest. We aim to equip our students with advanced knowledge and techniques to use throughout their studies.

## ENTRANCE REQUIREMENTS

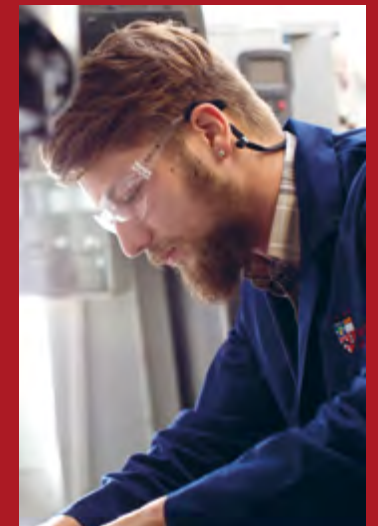
The requirement for most taught Masters programmes is a second-class UK Honours degree (or equivalent) in an appropriate discipline from an approved university. Some programmes have more specific requirements. Please see our online prospectus for more information.



## PROGRESSION

Students on taught programmes of study must satisfy the progress requirements of their specific programme and comply with the University's Procedures for Determining Progression and Award in modularised taught programmes (Grade Spectrum).

Details of progression requirements can be found on our webpages.



## ASSESSMENT

Masters degrees usually conclude with a project or dissertation.

Full details can be found at [abdn.ac.uk/infohub/study/assessment](http://abdn.ac.uk/infohub/study/assessment)



# Applying to our programmes

Taught degrees

1

## CHOOSE YOUR PROGRAMME

This guide contains an overview of all our taught programmes, but you can find much more information and all our entry requirements at: [abdn.ac.uk/postgraduate](https://abdn.ac.uk/postgraduate)



2

## SUBMIT YOUR ONLINE APPLICATION

All applications should be submitted online through our Applicant Portal: [abdn.ac.uk/postgraduate/apply](https://abdn.ac.uk/postgraduate/apply)

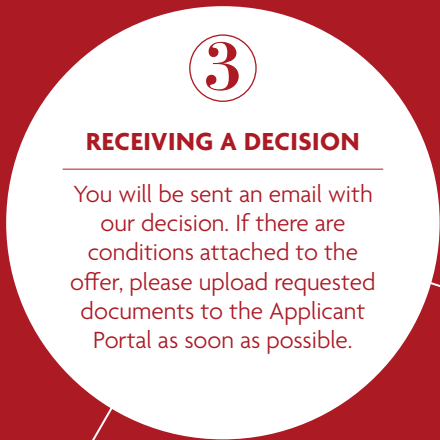
PGDE applications must be made through UCAS: [ucas.com/teacher-training](https://ucas.com/teacher-training)



3

## RECEIVING A DECISION

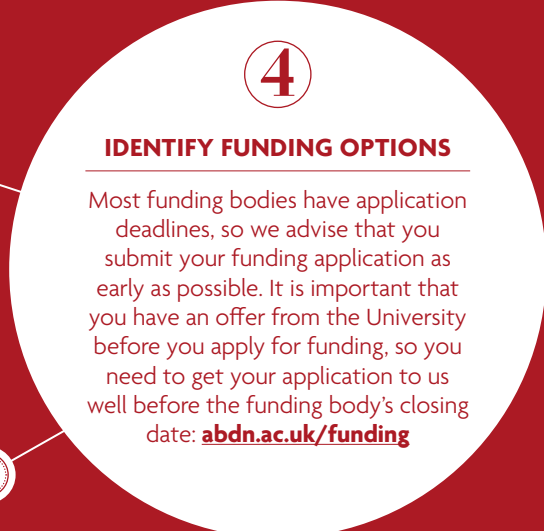
You will be sent an email with our decision. If there are conditions attached to the offer, please upload requested documents to the Applicant Portal as soon as possible.



4

## IDENTIFY FUNDING OPTIONS

Most funding bodies have application deadlines, so we advise that you submit your funding application as early as possible. It is important that you have an offer from the University before you apply for funding, so you need to get your application to us well before the funding body's closing date: [abdn.ac.uk/funding](https://abdn.ac.uk/funding)



5

## ACCEPTING YOUR OFFER

If you wish to accept the offer, please return your completed acceptance and financial guarantee forms as soon as possible. If you are waiting to hear the outcome of a funding application, you can still accept the offer of admission then send the completed financial guarantee form with the letter of sponsorship later.



6

## REVIEW YOUR JOINING PACK

Once cleared for admission you will receive a pack of joining instructions which includes a Certificate of Acceptance, information on accommodation, registration, tuition fees etc. International students who declare they require a Tier 4 visa to enter the UK will receive a CAS number so that they may apply.





# Life enriching degrees

All full-time and part-time degrees are delivered on campus. Some degrees are delivered online only and others have the option of either study mode. To find detailed information on each postgraduate degree, please visit our online postgraduate prospectus [abdn.ac.uk/postgraduate](http://abdn.ac.uk/postgraduate)

AWARD	DEGREE TITLE	STARTS	STUDY MODE
<b>A</b>			
<b>Accounting &amp; Finance</b>			
MScEcon	Accounting and Finance	Sept	FT PT
MBA	Finance	Sept	FT PT
MSc	Finance	Jul/Oct/ Jan/Mar	O
MSc	Finance and Investment Management	Sept	FT PT
MSc	Finance and Investment Management (inc level 1 CFA exam)	Sept	FT PT
MSc	Finance and Real Estate	Sept	FT PT
MSc	Finance and Real Estate (inc level 1 CFA exam)	Sept	FT PT
MSc	International Business and Finance	Sept/Jan	FT PT
MSc	International Finance	Sept	FT PT
MSc	International Finance (inc level 1 CFA exam)	Sept	FT PT
<b>Applied Health Sciences</b>			
PgCert	Advanced Clinical Practice	Sept	PT BL
MSc/PgDip/PgCert	Clinical Nutrition	Sept/Jan	O
MSc	Global Health and Management	Sept	FT PT
MSc/PgDip/PgCert	Health Economics for Health Professionals	Sept	O
MSc	Health Psychology	Sept	FT PT
MSc	Human Nutrition	Sept	FT PT
MPH	Master of Public Health	Sept	FT PT O
PgCert	Research Methods for Health	Sept	O
<b>Anthropology</b>			
MLitt	Museum Studies	Sept/Jan	FT PT
MSc	People and the Environment	Sept	FT PT
MRes	Social Anthropology	Sept	FT PT
<b>Archaeology</b>			
MSc	Archaeology	Sept	FT PT
MSc	Archaeology of the North	Sept/Jan	FT PT
MSc	Osteoarchaeology	Sept	FT PT



AWARD	DEGREE TITLE	STARTS	STUDY MODE
<b>B</b>			
<b>Business and Management</b>			
MRes	Business Research	Sept	FT PT
MSc	Digital Marketing Leadership	Jun	PT O
MBA	Energy Management	Sept/Jan	FT PT
MBA	Executive MBA	Sept/Jan	PT
MSc	International Business Management	Sept/Jan	FT PT
MSc	Leadership, CSR and Sustainability	Sept	FT PT
MSc	Marketing Management	Sept	FT PT
MBA	Master of Business Administration	Sept/Jan	FT PT
MBA	MBA (Global)	Sept/Jan/ Apr/Jul	O
MSc	Project Management	Sept	O

## C

### Chemistry

MSc	Analytical Chemistry	Sept	FT PT
MSc	Oil and Gas Chemistry	Sept/Jan	FT

### Clinical Pharmacology and Drug Development

MSc	Clinical Pharmacology	Sept	FT PT
MRes	Drug Discovery	Sept	FT PT
MSc	Drug Discovery and Development	Sept	FT PT
MSc	Molecular Medicine	Sept	FT PT
MSc	Stratified Medicine and Pharmacological Innovation	Sept	FT

### Computing Science

MSc	Artificial Intelligence	Sept	FT
MSc	Information Technology	Sept/Jan	FT O
MSc	Petroleum Data Management	Sept	FT O

AWARD	DEGREE TITLE	STARTS	STUDY MODE
<b>D</b>			
<b>Dentistry</b>			
PgCert	Special Care Dentistry	Jan	PT BL

### Divinity, Theology and Religious Studies

MTh	Divinity	Sept	FT PT
MTh	Ministry Studies	Sept/Jan	PT

## E

### Economics

MSc	International Finance	Sept	FT PT
MSc	International Finance (inc level 1 CFA exam)	Sept	FT PT
MSc	Law & Economics of Oil and Gas	Sept	FT
MSc	Petroleum, Energy Economics and Finance	Sept	FT PT

### Education

MEd	Autism and Learning	Sept	PT BL
PgDip	Community Learning and Development	Sept	PT BL
MEd	Early Years	Sept	PT O
PGDE	Education	Sept	FT
PgCert	Education Studies	Sept	PT BL
Med	Inclusive Practice	Sept/Jan	PT BL O
MSc	Leadership in Professional Contexts	Sept/Jan	PT O
MEd	Masters in Education	Sept/Jan	PT O
PGCert	Mid Level Leadership	Sept	PT O
MEd	Pastoral Care, Guidance and Pupil Support	Sept/Jan	PT O
MSc	Person-Centred Counselling	Sept	PT
PGCert	STREAP (Gaelic Medium Education)	Sept	PT
MSc	Studies in Mindfulness	Sept	PT BL
PGCert	Teaching Qualification Further Education	Sept	PT O
MSc	Social and Educational Research	Oct	FT PT



AWARD	DEGREE TITLE	STARTS	STUDY MODE
<b>Engineering</b>			
MSc	Advanced Chemical Engineering	Sept	FT
MSc	Advanced Mechanical Engineering	Sept	FT
MSc	Advanced Structural Engineering	Sept/Jan	FT
MSc	Decommissioning	Sept	FT <span>○</span>
MSc	Global Subsea Engineering (with Curtin University, Australia)	Sept	FT
MSc	Offshore Engineering	Sept	FT PT <span>○</span>
MSc	Offshore Structural Engineering	Sept	<span>○</span>
MSc	Oil and Gas Engineering	Sept/Jan	FT <span>○</span>
MSc	Oil and Gas Structural Engineering	Sept	<span>○</span>
MSc	Petroleum Engineering	Sept/Jan	FT PT <span>○</span>
MSc	Process Safety (Chemical Engineering)	Sept	FT PT <span>○</span>
MSc	Project Management	Sept	<span>○</span>
MSc	Renewable Energy Engineering	Sept	FT <span>○</span>
MSc	Reservoir Engineering	Sept	FT
MSc	Safety and Reliability Engineering	Sept	FT PT <span>○</span>
MSc	Safety and Reliability Engineering for Oil and Gas	Sept	FT PT <span>○</span>
MSc	Subsea Engineering	Sept/Jan	FT PT <span>○</span>
<b>Environmental and Biological Sciences</b>			
MSc	Applied Marine and Fisheries Ecology	Sept	FT PT
MSc	Ecology and Conservation	Sept	FT PT
MSc	Environmental and Ecological Sciences	Sept	FT PT
MSc	Environmental and Forest Management	Sept	FT PT
MSc	Environmental Management	Sept	FT PT
MSc	Environmental Pollution and Remediation	Sept	FT PT
MSc / MRes	Environmental Science	Sept	FT PT
MSc	Marine Conservation	Sept	FT PT
MSc / MRes	Soil Science	Sept	FT PT

AWARD	DEGREE TITLE	STARTS	STUDY MODE
<b>G</b>			
<b>Geography and Environment</b>			
MSc	Environmental Partnership Management	Sept	FT PT
MSc	Geographical Information Systems	Sept/Jan	FT PT
MLE	Rural Surveying and Rural Property Management	Sept	FT PT
<b>Geology</b>			
MSc	Geophysics	Sept	FT
MSc	Integrated Petroleum Geosciences	Sept	FT
MSc	Oil and Gas Enterprise Management	Sept/Jan	FT
MSc	Petroleum Data Management	Sept	FT <span>○</span>
MSc	Reservoir Engineering	Sept	FT
<b>H</b>			
<b>Healthcare Education</b>			
PgCert	Advanced Clinical Practice	Sept	PT BL
MSc	Clinical Education	Sept	PT BL
MSc	Physician Associate Studies	Sept	FT
PgCert	Research Methods for Health	Sept	<span>○</span>
<b>History, History of Art and Philosophy</b>			
MLitt	Art and Business	Sept	FT PT
MLitt	Medieval and Early Modern Studies	Sept	FT PT
MLitt	Modern History	Sept	FT PT
MLitt	Scottish Heritage	Sept	<span>○</span>



AWARD	DEGREE TITLE	STARTS	STUDY MODE
<b>L</b>			
<b>Law</b>			
LLM	Business Law and Sustainable Development	Sept	FT PT
LLM	Criminal Justice	Sept/Jan	FT PT
LLM	Criminal Justice and Human Rights	Sept/Jan	FT PT
LLM	Dispute Resolution	Sept/Jan	FT <span style="border: 1px solid black; border-radius: 50%; padding: 2px;">O</span>
LLM	Energy and Environmental Law with Dissertation	Sept/Jan	FT PT
LLM	Energy and Environmental Law with Professional Skills	Sept/Jan	FT PT
LLM	Energy Law with Dissertation	Sept/Jan	FT PT
LLM	Energy Law with Professional Skills	Sept/Jan	FT PT
LLM	General Law	Sept/Jan	FT PT
LLM	Human Rights	Sept	FT PT
LLM	Human Rights and Criminal Justice	Sept/Jan	FT PT
LLM	Intellectual Property Law	Sept/Jan	FT PT
LLM	Intellectual Property with Professional Skills	Sept/Jan	FT PT
LLM	International Commercial Law with Dissertation	Sept/Jan	FT PT
LLM	International Commercial Law with Professional Skills	Sept/Jan	FT PT
LLM	International Law	Sept/Jan	FT PT
LLM	International Law and International Relations	Sept	FT PT
LLM	International Law and Strategic Studies	Sept	FT PT
LLM	International Trade Law	Sept/Jan	FT PT <span style="border: 1px solid black; border-radius: 50%; padding: 2px;">O</span>
LLM	International Trade Law and Treaty Negotiation	Sept/Jan	FT PT <span style="border: 1px solid black; border-radius: 50%; padding: 2px;">BL</span>
LLM	International Trade Law and Treaty Negotiation with Professional Skills	Sept/Jan	FT PT <span style="border: 1px solid black; border-radius: 50%; padding: 2px;">BL</span>
MSc	Law & Economics of Oil and Gas	Sept/Jan	FT
LLM	Oil and Gas Law with Dissertation	Sept/Jan	FT PT <span style="border: 1px solid black; border-radius: 50%; padding: 2px;">O</span>
LLM	Oil and Gas Law with Professional Skills	Sept/Jan	FT PT <span style="border: 1px solid black; border-radius: 50%; padding: 2px;">BL</span>
LLM	Private International Law	Sept/Jan	FT PT
PgDip	Professional Legal Practice	Sept	FT
LLM	Public International Law	Sept/Jan	FT PT
MSc	Strategic Studies and International Law	Sept	FT PT

AWARD	DEGREE TITLE	STARTS	STUDY MODE
<b>Literature, Creative Writing, Language &amp; Linguistics, Visual Culture</b>			
MSc	Creative and Cultural Communication	Sept	FT PT
MLitt	Creative Writing	Sept/Jan	FT PT
MLitt	English Literary Studies	Sept/Jan	FT PT
MLitt	Ethnology and Folklore	Sept	FT PT
MLitt	Film, Visual Culture and Arts Management	Sept/Jan	FT PT
MSc	Professional Communication	Sept	FT PT
MSc	TESOL	Sept	FT PT
MSc	Translation Studies	Sept	FT PT
PGCert	Translation Studies	Sept	<span style="border: 1px solid black; border-radius: 50%; padding: 2px;">O</span>
<b>M</b>			
<b>Mathematics</b>			
MSc	Financial Mathematics	Sept	FT
<b>Medical Imaging</b>			
MSc	Medical Imaging	Sept	FT PT
MSc	Medical Physics	Sept	FT PT
<b>Medical Sciences</b>			
MSc	Biotechnology, Bioinformatics, and Bio-Business	Sept	FT PT
MSc	Cardiovascular Science and Diabetes	Sept	FT PT
MSc	Genetics	Sept	FT PT
MSc	Immunology and Immunotherapy	Sept	FT PT
MSc	Industrial Biotechnology	Sept	FT PT
MRes	Medical Mycology for Clinicians	Sept	FT
MRes	Medical Mycology and Fungal Immunology	Sept	FT
MRes	Medical Sciences	Sept	FT
MSc	Microbiology	Sept	FT PT
MSc	Molecular Medicine	Sept	FT PT
MSc	Reproductive and Developmental Biology	Sept	FT PT



AWARD	DEGREE TITLE	STARTS	STUDY MODE
<b>Music</b>			
MMUS	Music	Sept	FT PT
MMUS	Sonic Arts	Sept	FT PT
MMUS	Vocal Music	Sept	FT PT

## P

### Politics and International Relations

MSc	Energy, Politics and Law	Sept	FT PT
MSc	International Relations	Sept	FT PT
MSc	International Relations and International Law	Sept	FT PT
MSc	International Security	Sept	FT PT
MRes	Political Research	Sept	FT PT
MSc	Strategic Studies	Sept	FT PT
MSc	Strategic Studies and Energy Security	Sept	FT PT
MSc	Strategic Studies and International Law	Sept	FT PT
MSc	Strategic Studies and Management	Sept	FT PT

### Psychology

MSc	Foundations of Clinical Psychology	Sept	FT PT
MSc	Health Psychology	Sept	FT PT
MSc	Psychological Studies	Sept	FT PT
MRes	Psychology	Sept	FT PT

## R

### Real Estate

MSc	Finance and Real Estate	Sept	FT PT
MSc	Finance and Real Estate (inc level 1 CFA exam)	Sept	FT PT
MSc	Real Estate (Commercial Option)	Sept	FT PT
MSc	Real Estate (International Option)	Sept	FT PT

AWARD	DEGREE TITLE	STARTS	STUDY MODE
<b>S</b>			
<b>Sociology</b>			
MSc	Comparative European Societies	Sept	FT PT
MSc	Global Conflict and Peace Processes	Sept	FT PT
MSc	Globalisation	Sept	FT PT
MSc	Latin American Studies	Sept/Jan	FT PT
MSc	Policy Evaluation	Sept	FT PT
MSc	Post Conflict Justice and Peacebuilding	Sept	FT PT
MSc	Religion and Society	Sept	FT PT
MSc	Sex, Gender, Violence	Sept	FT PT
MRes	Social Research	Sept	FT PT
MSc	Sociology	Sept	FT PT

## Short courses

The University of Aberdeen offers individual, credit-bearing short online courses that can be taken to work towards a degree qualification or for professional/personal development reasons. Our online short courses are self-contained units of learning that are taught and assessed to the same quality as our degree programmes. For more information and a full list of available short courses visit: [abdn.ac.uk/short-courses](http://abdn.ac.uk/short-courses)

### Applied Health

Applied Anatomy: Lower Limb

Applied Anatomy: Upper Limb

Applied Statistics

Assessment of Nutritional Health

Designing Real World Trials

Epidemiology

Evidence- Based Health

Fundamentals of Human Nutrition and Metabolism

Fundamentals of Research Design

Health Informatics

Introduction to Global Health

Nutrition and Health Through the Life Stages

Public Health in Action

Qualitative Health Research



## Creative Writing

Writing Poetry: Voice and Skills

## Education

Critical Approaches to Academic Literature

Exploring Leadership

Leading and Managing from the Middle

Leading Change

Leading Effective Improvement

Personal and Social Development, Health and Wellbeing

Research Methods

## Engineering

Brown Field Structural Engineering

Conceptual Design of Topsides Modules

Design of Connections

Energy Conversion and Storage

Energy from Biomass

Fire & Explosion Engineering

Flow Assurance

Fundamental Safety Engineering & Risk Management Concepts

Human Factors Engineering

Offshore Structures and Subsea Systems

Pipelines and Soil Mechanics

Project Management

Risers Systems and Hydrodynamics

Statistics and Probability for Safety, Reliability and Quality

Subsea Construction, Inspection and Maintenance

Subsea Control

Subsea Integrity

Well & Production Engineering

Well Plugging & Abandonment

## History

Approaches to Research: Archives and Sources

Scotland: A Millennium of History

The Scottish Diaspora

## Law

Co-operative Contracts in the Oil and Gas Industry

Core Principles of World Trade Organisation Law

Decommissioning of Offshore Installations: Commercial Aspects

Decommissioning of Offshore Installations: Regulatory Aspects

Financing of International Sales

Governance and Petroleum Developments

International Arbitration Law

International Arbitration Practice

International Investment Arbitration

International Investment Law

International Sale of Goods

Investment Disputes in the Oil and Gas Context

Legal Principles

Mediation Theory and Practice

Negotiation Skills

Petroleum Law: Resource Management

Regulatory Law for Petroleum Operations

Risk Allocation in Oilfield Services Contracts

## Leadership

Exploring Leadership

Leading and Managing from the Middle

Leading Change

Leading Effective Improvement

## Psychology

Human Factors in Industrial Practice

# Coming soon

The following programmes are coming soon, subject to approval.

MSc Advanced Restorative Dental Practice

LLM Natural Resources



# Research degrees

**1<sup>st</sup>**  
IN THE UK

**FOR AGRICULTURE,  
VETERINARY AND  
FOOD SCIENCE**

Ranked by Times Higher  
Education based on  
REF 2014 GPA scores

Research degrees provide thorough training in a particular subject area through original exploration and experimentation. The research culminates in a thesis or dissertation which sets out the conclusions of the research undertaken.



## ENTRANCE REQUIREMENTS

You must hold either a Masters degree, a first or upper second-class Honours degree in an appropriate discipline from an approved university, or an equivalent qualification. Those with lower qualifications may be asked to register initially for a Masters degree (MLitt, MSc, MTh, LLM, MLE or MRes).

## STRUCTURE AND DURATION

Students studying for a research postgraduate degree may register for either full-time or part-time study. Each student is assigned at least one supervisor who is a member of the University's academic staff.

## PROGRESSION

Progress is monitored regularly through formal assessments and routine progress reports.

Unsatisfactory progress however, on rare occasions, may lead to a transfer from PhD to a research Masters, or a student being required to end their studies.

## YOUR PATHWAY TO ENGAGED RESEARCH

Our Public Engagement with Research team provides a vibrant range of activities to enhance your research experience and professional development. Whether media training, academic writing, science communication, project management, community engagement or working with industry, you will find a rich mix of training and experiences to expand your research horizons. Most of the opportunities we provide involve external partners, helping to build networks and widen experience. Some are targeted to stakeholders such as policy makers, industry or the media. Others are major public festivals and events reaching thousands of public and school children such as British Science Week, European Researchers' Night, PechaKucha Nights and our University May Festival.

Visit [abdn.ac.uk/engage](http://abdn.ac.uk/engage) to discover more.

## POSTGRADUATE RESEARCH SCHOOL

The Postgraduate Research School is dedicated to the postgraduate research community. We work closely with academic schools to provide advice and support to all postgraduate researchers no matter where you are in your research journey. Based in Crombie House on the Kings campus, our Postgraduate Research School is a vibrant hub for independent, collaborative working and social activities. We provide high-quality personal and professional development programmes designed to add value to your PhD and help you widen your networks beyond an academic environment.

[abdn.ac.uk/pgrs](http://abdn.ac.uk/pgrs)

# Research with the best

The University of Aberdeen is globally recognised as an institution making an impact on the world around us. 75% of our research has been ranked either internationally excellent or world leading in the latest 2014 REF results. Our world-class research Institutes consider themes including Energy, Environment, Health, Nutrition and many more. Our staff are experts in their fields and invite you to join them in their discoveries.



**Professor John Swinton**

Professor Swinton is a Scottish theologian and a Chair in Divinity and Religious Studies at the School of Divinity, History, and Philosophy. His research interests emerged from his background in nursing, ministry and healthcare chaplaincy. Professor Swinton is particularly interested in multidisciplinary research and has focused at the nexus between healthcare and spirituality. His recent research has been focused on the theology of disability, which explores areas such as dementia, mental health, genetics, religion and autism. His book *Dementia: Living in the Memories of God* received the prestigious Michael Ramsey Literary Prize in 2016. His most recent book *Becoming Friends of Time: Disability, Timefulness and Gentle Discipleship*, was given an award of merit by Christianity Today magazine.

**Professor Gordon Brown**

Professor Brown is the Director of the internationally renowned MRC Centre for Medical Mycology at the University of Aberdeen. Professor Brown and his group undertake ground breaking research into discovering the components of the immune system that are responsible for recognising and responding to fungal infection. The team recently discovered a key component of the immune system that helps fight against a fungus that kills around 200,000 people every year and causes lung and allergic diseases in millions of others. Speaking about the discovery, Professor Brown said: "This latest finding revealed that our immune system is responding to parts of the fungus we previously didn't know it recognised. Whilst this discovery is a huge step forward, it emphasises just how complex the fight against these fungi is."



**Professor Alison Lumsden**

Professor Lumsden is a Chair in English and the co-director of the Walter Scott Centre, which exists to promote all aspects of research on Walter Scott. She has worked on scholarly editions of both his novels and poetry. She also publishes on other aspects of Scottish literature, including *Nan Shepherd* and *Lewis Grassie Gibbon*.



**Professor Lora Heisler**

Professor Heisler is a Chair in Human Nutrition and Head of the Obesity and Food Choice Division of the Rowett Institute at the University of Aberdeen. Professor Heisler's research focuses on the brain control of appetite and blood sugar with the aim of discovering new medications to improve obesity and diabetes. Her recent work uncovered a new way to treat type 2 diabetes, by targeting brain circuits. Professor Heisler said the discovery was important because type 2 diabetes is an incredibly prevalent disease in the modern world and new treatment choices are needed. Professor Heisler is an elected Fellow of the Royal Society of Edinburgh and was awarded the 2018 Outstanding Scientific Achievement Award (OSAA) from the American Diabetes Association in recognition of her innovative diabetes research.



## RESEARCH EXCELLENCE

The University of Aberdeen has a truly global presence. Our postgraduate research students come from all over the world.

From the deepest ocean trenches in the world, to the smallest particles in the universe; from Alaskan permafrost discoveries to pioneering cancer treatments, the University of Aberdeen houses world-leading academics from across the globe committed to deep analytical thinking.

We offer world class facilities and exciting opportunities to work closely in industry and interdisciplinary areas, innovation centres and spin out company formation. We continue to provide ground breaking research with real impact on us all and our society.

## RESEARCH OVERVIEW

**25<sup>th</sup>** in UK for international collaborations Leiden rankings (2013-16)

**75%** of our research is internationally excellent (REF 2014)

**£280m** Invested in facilities

**1<sup>st</sup>** To perform an MRI scan



# Applying to our programmes

Research degrees



1

## DEFINE YOUR RESEARCH AREA

Search our online prospectus for a comprehensive list of our research areas: [abdn.ac.uk/study/research-areas](http://abdn.ac.uk/study/research-areas)



2

## CONSIDER A PRE-DEFINED PHD PROJECT

You can also apply to a pre-defined PhD. These are projects which the University has identified as strong research opportunities for high calibre applicants. You can find out more information on these PhDs here: [abdn.ac.uk/study/phd-opportunities](http://abdn.ac.uk/study/phd-opportunities)



6

## ACCEPTING YOUR OFFER

If you are offered a place and wish to accept your offer, please return your completed acceptance forms as soon as possible. If there are conditions attached to your offer, please upload requested documents to the Applicant Portal as soon as possible. If you are waiting to hear the outcome of a funding application, you can still accept the offer of admission then send the relevant financial forms of sponsorship later.



3

## CONTACT POTENTIAL SUPERVISORS

You should contact potential supervisors within your School or Institute of interest to discuss research proposals. If applying for a pre-defined project make contact with your identified supervisor before you apply to introduce yourself and ask any questions.



5

## SUBMIT YOUR ONLINE APPLICATION

All applications should be made using our online application form: [abdn.ac.uk/postgraduate/apply](http://abdn.ac.uk/postgraduate/apply) You will be contacted if further information or documents are required.



4

## WRITE YOUR RESEARCH PROPOSAL

Some students, such as those who are not applying for a pre-defined or funded project, may need to write a research proposal as part of their application. Your prospective supervisor or School can advise if a research proposal is required.





“There are ample opportunities to develop research skills, apply them, and develop confidence in presenting your work to others. Recreational activities on offer in Aberdeen help to ensure that a work-life balance can be maintained throughout the doctoral training period.”

*Daniel Whibley*

PhD: The course and prognosis of disabling arm pain

# Research areas

To find detailed information on each postgraduate research degree, please visit our online postgraduate prospectus [abdn.ac.uk/study/postgraduate-research](http://abdn.ac.uk/study/postgraduate-research)

RESEARCH SUBJECT AREA	DEGREE TYPE
Accountancy	PhD, MPhil
Anthropology	PhD, MPhil
Applied Health Sciences	PhD
Archaeology	PhD, MSc
Biological and Environmental Sciences	PhD
Biomedical Sciences	PhD
Celtic and Anglo-Saxon Studies	PhD, MLitt
Citizenship, Civil Society and Rule of Law	PhD
Chemistry	PhD
Computing Science	PhD
Creative Writing	PhD, MLitt
Dentistry	PhD
Divinity	PhD
Economics	PhD, MPhil
Education	EdD, PhD, MPhil
Engineering	EngD, PhD
English	PhD, MPhil, MLitt
European Labour Market Research	PhD, MPhil
Film and Visual Culture	PhD, MPhil, MLitt
Finance	PhD, MPhil
French	PhD, MLitt
Geography and Environment	PhD
Geology and Petroleum Geology	PhD



RESEARCH SUBJECT AREA	DEGREE TYPE
German	MPhil, MLitt, PhD
Hispanic Studies	PhD
History	PhD
History of Art	PhD
Law	PhD, LLM
Linguistics	PhD, MPhil, MLitt
Management Studies	PhD, MPhil
Mathematical Sciences	PhD
Medicine	MD, PhD
Music	PhD, MPhil
Nutrition and Health	PhD
Philosophy	PhD
Physics	PhD
Politics and International Relations	PhD, MPhil
Psychology	PhD
Real Estate	PhD, MRes
Religious Studies	PhD
Scandinavian Studies	PhD
Sociology	PhD, MPhil, MRes
Spanish and Latin American studies	PhD
Spirituality, Health and Disability	PhD
The Elphinstone Institute	PhD, MPhil
Theology	DPT
Transnational Cultural Studies	MRes



“I have never met a more supportive, energetic and skilled individual than my supervisor, Dr William Barras. He is always there for me whenever I need him and never more than an email away. Moreover, the teaching and administrative staff are all marvellous. I have my office equipped with all modern day needs – computer, printer, online access to journals and books, a library with a pile of resource material and much more.”

**Khurshed Ahmad**  
PhD in Linguistics



“My study topic has remained a hot topic among a wide range of scientists across different parts of the world. In addition, studying this topic in a world-class university, with state-of-the-art facilities at the Rowett Institute, has certainly made my future prospects open to a broader scientific community -meaning I have gained a career advantage for my future employers.”

*Sisir Kumar Barik*  
PhD in Human Medicine



# Making the most of your studies

## APPLY YOURSELF TO INDUSTRY

Our postgraduate programmes often provide the opportunity to take part in an industry project. These projects allow students to work with industry and apply their learning to real case studies. Students not only receive invaluable experience but also gain the ability to build relationships with potential employers.

## INSPIRATIONAL MENTORING

Several of our degrees include industry mentoring which allows you as a student to receive first-hand knowledge and guidance from one of our selected senior industry professionals. This rare insight will be advantageous in kick-starting your career.

## LEARN FROM INDUSTRY LEADERS

You can receive high quality industry knowledge and teaching without leaving campus with our industry lecturers. These highly sought after industry professionals provide a wealth of knowledge and expertise to enhance your employability.



## ENLIGHTENING EXCURSIONS

Our field trips enrich learning and provide opportunities for teaching to be applied practically. Some of our programmes offer excursions to local and international sites including Asia, Italy and North America.

## YOUR OWN LEARNING SPACE

A number of our taught Masters degrees have dedicated rooms used for study, learning and integrating with colleagues. All PhD students are also given their very own study space within their department.

## ENTERPRISE & ENTREPRENEURSHIP

The Careers Service supports students' enterprise and entrepreneurship ambitions by directing them to relevant expertise, information and business competitions. Working in partnership with the Scottish Institute for Enterprise (SIE) we offer a wide range of workshops to students to develop enterprise and innovation skills, provide tailored advice and assist students in making the right connections to start a business of their own.

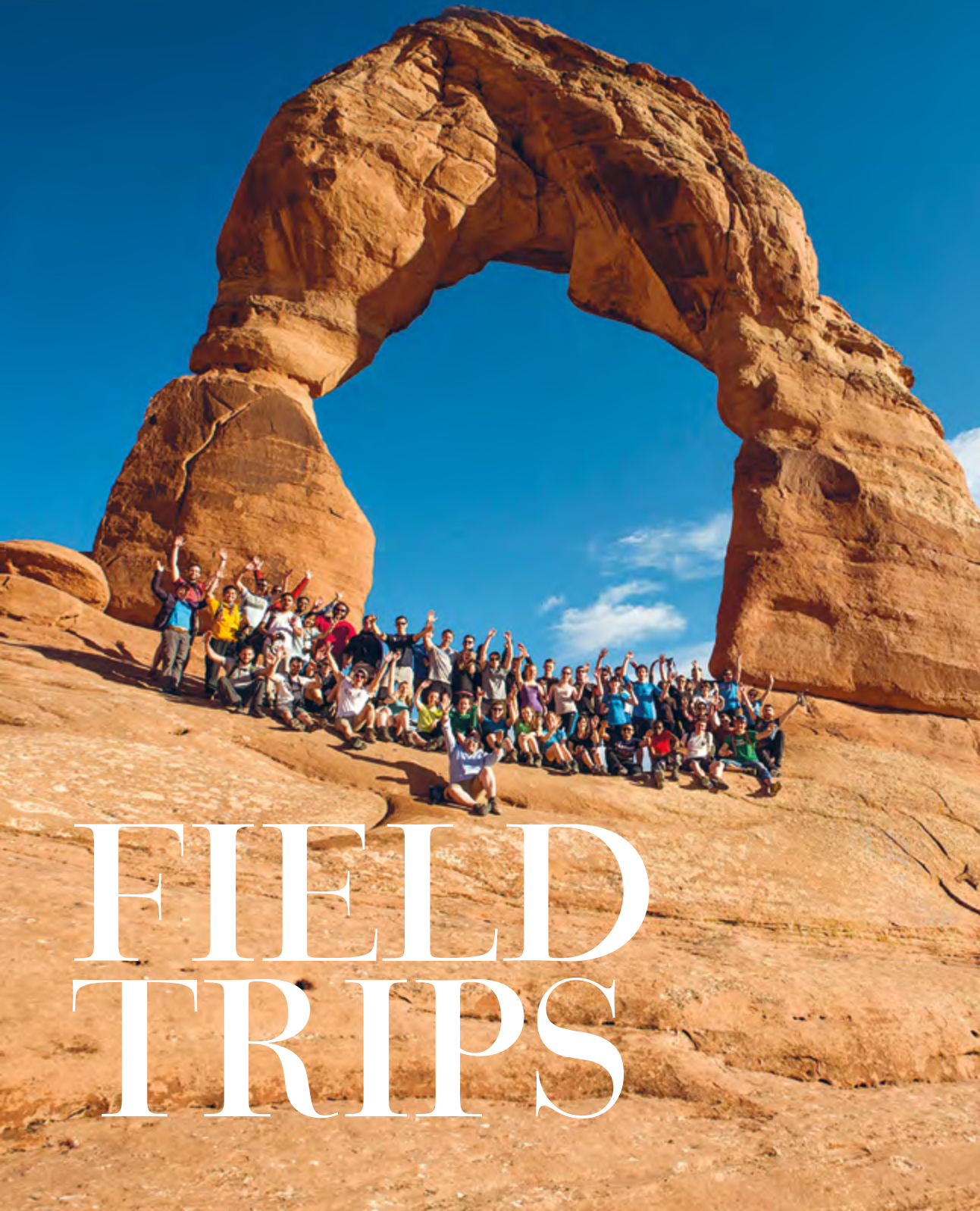
## RESEARCHER DEVELOPMENT

At Aberdeen, we are committed to providing you with skills and experiences that will support your postgraduate research journey and equip you for future employment whether in academia or elsewhere.

Our Researcher Development team within the Postgraduate Research School, supports your personal and professional development. We encourage self-reflection; enhance your transferable skills; stimulate your creativity and maximise your career potential. A major part of our approach is linking our training programmes to practical opportunities enabling you to evidence skills on your CV.

To discover more visit [abdn.ac.uk/pgrs/training-development](http://abdn.ac.uk/pgrs/training-development)





# FIELD TRIPS



At the University of Aberdeen, we believe academic enlightenment can be delivered outside the four walls of the classroom. We give our students the opportunity to discover this through our worldwide excursions and field trips.



Please note, field trips are only available on some degree programmes.





CAREERS

# Careers

**The University's Careers Service:  
Inspiring career success for all  
through collaboration, innovation  
and professionalism.**

Throughout your studies and after your graduation we provide opportunities to:

Explore your career potential and options with our specialist Careers Advisers, through our extensive database of careers planning resources and professional one-to-one advice, including support and feedback while developing your CV.

Develop your skills, confidence and experience through our innovative programmes such as the Leadership Academy, Career Mentoring and employer-led skills sessions.

Connect with regional, national and international employers through careers fairs, employer presentations and networking events.

To find out more about the Careers Service, visit [abdn.ac.uk/careers](http://abdn.ac.uk/careers)



## LEADERSHIP ACADEMY

Whether you have leadership experience or you wish to become a leader in the future, the Leadership Academy is here to enhance your leadership skills.

The Academy aims to develop your leadership skills and qualities through a series of interactive workshops and seminars. You will learn about different leadership skills and styles, network with professionals and gain useful insights and tips from employers and leadership experts.



## CAREER MENTORING

The Career Mentoring Programme is a 6-month partnership between current students and professionals from a wide range of sectors. Students are matched with experienced graduates who can share their expertise in a particular profession or employment area. Your mentor can help you to develop your own career ideas, increase your knowledge and confidence, and develop your professional networks.



ALUMNI  
Profile

“My programme has a fantastic reputation amongst the industry. Completing this programme has provided me with access to industry, opportunity to network with many companies and professionals - but most importantly, it has also provided me with the qualification I need to enter industry to work as a graduate petroleum geologist or to complete an industry applicable PhD programme.”

*Lucinda Kate Layfield*  
MSc Integrated Petroleum  
Geoscience (IPG)



# Finance & Scholarships



## TUITION FEES

Tuition fees will vary depending on your chosen degree. Up-to-date information on all tuition fees for taught and research degree programmes (including part-time study) can be found online.

Please be advised that some programmes may also have additional costs. We recommend that you check our tuition fees pages carefully in order to identify these.

Further information on fees and funding can be found at [abdn.ac.uk/tuition-fees](http://abdn.ac.uk/tuition-fees)



## FINANCIAL SUPPORT

### Funding

The University of Aberdeen offers a substantial portfolio of scholarships and bursaries aimed at supporting students, some of which are funded by external sponsors. The best place to start your search is on our online funding database at [abdn.ac.uk/funding](http://abdn.ac.uk/funding) which lists all the bursaries and scholarships available each year.

### Alumni Discount Scheme

A 20% discount is available on postgraduate tuition fees for all alumni who have spent time at the University, including Study Abroad or Erasmus placement. The Alumni Discount Scheme applies to both home and overseas students, and applies to the self-funding element of the postgraduate tuition fee. For more information visit: [abdn.ac.uk/alumni-discount](http://abdn.ac.uk/alumni-discount)



“I was born in Scotland while my parents were studying in the UK. Therefore, coming back was always a dream. My dreams came true when I found the research topic of my interest, and received an Elphinstone Scholarship to complete my studies here at the University of Aberdeen.”

**Sadik Omairey**  
PhD: Multi-scale Fibre Reinforced Composite Design: *A Reliability-Based Optimisation Approach*



ACCOMMODATION  
Feel at home

# Feel at home

## GUARANTEED ACCOMMODATION\*

All new single students are guaranteed\* an offer of accommodation from within our portfolio or with one of our partner providers, provided your application reaches us by the deadline.



Ask questions and find out how and when to apply  
Tel: +44 (0)1224 273502  
studentaccomm@abdn.ac.uk  
[abdn.ac.uk/accommodation](http://abdn.ac.uk/accommodation)



### We offer:

- A range of properties in or close to the Old Aberdeen Campus, the Hillhead Student Village and the City Centre
- Headspace, the central hub within the Hillhead Student Village offers extensive social/study facilities and has a reception open 24 hours a day
- Wireless network throughout
- A frequent bus service travelling to both the main campus and the City Centre
- A dedicated team to provide support and information to enhance student experience while you live in halls. As well as providing advice and guidance, the team run a variety of social events throughout the year
- 24/7 maintenance support is available
- Car parking and bike storage is available near to our accommodation
- We also offer limited accommodation for couples and families

\* Terms and conditions apply

# Your learning resources

As a student of the University you will have access to a wide range of support services and world-class teaching and learning facilities.



An architecturally significant, **AWARD WINNING LIBRARY**



# 200,000

**SPECIAL LIBRARIES & ARCHIVES**

which hold an internationally significant collection of over 200,000 rare books printed mostly before 1840, and over 4,000 unique and manuscript collections.

The Sir Duncan Rice Library was named as one of the most beautiful libraries in the world  
Source: CEOWORLD magazine 2016



**24/7**

## COMPUTER LABS ACCESS

Language learning resources, through our **DEDICATED LANGUAGE CENTRE**



A range of food outlets offering **EVERYTHING** from halal to vegan options

Museum collections, which include **Anatomy, Archaeology, Anthropology, Art, Geology, Herbarium, History, Pathology, Scientific Instruments & Zoology**



## DISABILITY PROVISION

A range of specialist software on all classroom PCs, and a number of individual occupancy Assistive Technology Booths

Dedicated IT Service Desk

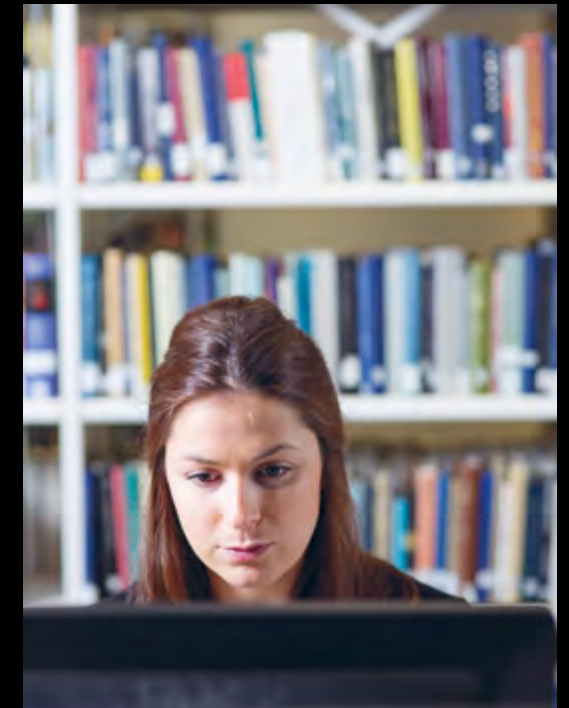
Student learning support and services



Wide range of software and high quality wireless printing

## STUDENT PORTAL

A secure web-based portal through which you can view and check your personal details, course enrolments, timetable, accommodation fees, library loans and exam results



## FOR MORE INFORMATION

[abdn.ac.uk/library](http://abdn.ac.uk/library)

[abdn.ac.uk/historic](http://abdn.ac.uk/historic)

[abdn.ac.uk/languagecentre](http://abdn.ac.uk/languagecentre)

[abdn.ac.uk/sls](http://abdn.ac.uk/sls)

[abdn.ac.uk/library/support/servicedesk](http://abdn.ac.uk/library/support/servicedesk)

# Sporting excellence

With outstanding Olympic standard sports facilities and a vibrant Sports Union with more than 50 different clubs, there are many ways to get involved.

## SPORTS VILLAGE

Aberdeen Sports Village provides outstanding sports and exercise facilities and is located just across the road from the main campus. Your home for sport during your studies, ASV offers exclusive student lifestyle memberships for University of Aberdeen students. [aberdeensportsvillage.com](http://aberdeensportsvillage.com)

## HIGH PERFORMANCE SPORT

The University of Aberdeen Development Trust Sports Bursary and scholarship programmes support elite student athletes as they combine academic and sporting excellence during their time at University. [abdn.ac.uk/sportandexercise/performance](http://abdn.ac.uk/sportandexercise/performance)



### Facilities include;

- State of the art gym, with more than 150 exercise stations
- Personal trainer induction with every membership
- Training plans
- Performance weights area
- Over 100 group exercise classes every week
- A 50 metre Olympic swimming pool
- A 25 metre Olympic diving and swimming pool
- An eight lane 400m running track
- A six lane indoor running straight
- Four squash courts
- Three sports studios
- Indoor 3G pitch
- Two health and relaxation suites
- Café in both centres



### There are numerous other sports facilities available across the University:

- Two rugby pitches
- A lacrosse pitch
- An artificial cricket wicket
- Outdoor tennis courts
- Floodlit football training areas
- The Balgownie Playing Fields, for football, rugby and shinty teams
- The Hillhead Centre has a full-size grass football pitch, a full-size sand-dressed synthetic pitch and a grandstand
- The River Dee boathouse rowing club
- Royal Deeside climbing bothy



## AUSA SPORTS UNION

As part of the Students' Association (AUSA), the Sports Union is a student elected body with a full-time student President for Sport, Sports Development Manager and Sports Administrator. The Sports Union's extensive networks of volunteers run the teams, clubs, intra-mural leagues and events at the University. [ausa.org.uk/sports](http://ausa.org.uk/sports)

*Zoey Clark*  
Silver Medalist at the World Championships 2017





# Course index

Research Methods for Health	35	Environmental and Ecological Sciences	38
Accounting and Finance	35	Environmental and Forest Management	38
Advanced Chemical Engineering	38	Environmental Management	38
Advanced Clinical Practice	35/39	Environmental Partnership Management	39
Advanced Mechanical Engineering	38	Environmental Pollution and Remediation	38
Advanced Structural Engineering	38	Environmental Science	38
Analytical Chemistry	36	Ethnology and Folklore	41
Applied Marine and Fisheries Ecology	38	Executive MBA	36
Archaeology	35	Film, Visual Culture and Arts Management	41
Archaeology of the North	35	Finance	35
Art and Business	39	Finance and Investment Management	35
Artificial Intelligence	36	Finance and Investment Management (inc level 1 CFA exam)	35
Autism and Learning	37	Finance and Real Estate	35/42
Biotechnology, Bioinformatics, and Bio-Business	41	Finance and Real Estate (inc level 1 CFA exam)	35/42
Business Law and Sustainable Development	40	Financial Mathematics	41
Business Research	36	Foundations of Clinical Psychology	42
Cardiovascular Science and Diabetes	41	General Law	40
Clinical Education	35/39	Genetics	41
Clinical Pharmacology	36	Geographical Information Systems	39
Community Learning and Development	37	Geophysics	39
Comparative European Societies	43	Global Conflict and Peace Processes	43
Creative and Cultural Communication	41	Global Health and Management	35
Creative Writing	41	Global Subsea Engineering (with Curtin University, Australia)	38
Criminal Justice	40	Globalisation	43
Criminal Justice and Human Rights	40	Health Economics for Health Professionals	35
Decommissioning	38	Health Psychology	35/42
Digital Marketing Leadership	36	Human Nutrition	35
Dispute Resolution	40	Human Rights	40
Divinity	37	Human Rights and Criminal Justice	40
Drug Discovery	36	Immunology and Immunotherapy	41
Drug Discovery and Development	36	Inclusive Practice	37
Early Years	37	Industrial Biotechnology	41
Ecology and Conservation	38	Information Technology	36
Education	37	Integrated Petroleum Geosciences	39
Education Studies	37	Intellectual Property Law	40
Energy and Environmental Law with Dissertation	40	Intellectual Property with Professional Skills	40
Energy and Environmental Law with Professional Skills	40	International Business and Finance	35
Energy Law with Dissertation	40	International Business Management	36
Energy Law with Professional Skills	40	International Commercial Law with Dissertation	40
Energy Management	36	International Commercial Law with Professional Skills	40
Energy, Politics and Law	42	International Finance	35/37
English Literary Studies	41	International Finance (inc level 1 CFA exam)	35/37

**NB:** See pages 53-55 for a list of research areas

International Law	40	Petroleum Data Management	36/39
International Law and International Relations	40	Petroleum Engineering	38
International Law and Strategic Studies	40	Petroleum, Energy Economics and Finance	37
International Relations	42	Physician Associate Studies	39
International Relations and International Law	42	Policy Evaluation	43
International Security	42	Political Research	42
International Trade Law	40	Post Conflict Justice and Peacebuilding	43
International Trade Law and Treaty Negotiation	40	Private International Law	40
International Trade Law and Treaty Negotiation with Professional Skills	40	Process Safety (Chemical Engineering)	38
Latin American Studies	43	Professional Communication	41
Law & Economics of Oil and Gas	37/40	Professional Legal Practice	40
Leadership in Professional Contexts	37	Project Management	36/38
Leadership, CSR and Sustainability	36	Psychological Studies	42
Marine Conservation	38	Psychology	42
Marketing Management	36	Public International Law	40
Master of Business Administration	36	Real Estate (Commercial Option)	42
Master of Public Health	35	Real Estate (International Option)	42
Masters in Education	37	Religion and Society	43
MBA (Global)	36	Renewable Energy Engineering	38
MBA Finance	35	Reproductive and Developmental Biology	41
Medical Imaging	41	Research Methods for Health	39
Medical Mycology and Fungal Immunology	41	Reservoir Engineering	38/39
Medical Mycology for Clinicians	41	Rural Surveying and Rural Property Management	39
Medical Physics	41	Safety and Reliability Engineering	38
Medical Sciences	41	Safety and Reliability Engineering for Oil and Gas	38
Medieval and Early Modern Studies	39	Scottish Heritage	39
Microbiology	41	Sex, Gender, Violence	43
Mid Level Leadership	37	Social and Educational Research	37
Ministry Studies	37	Social Anthropology	35
Modern History	39	Social Research	43
Molecular Medicine	36/41	Sociology	43
Museum Studies	35	Soil Science	38
Music	42	Sonic Arts	42
Offshore Engineering	38	Special Care Dentistry	37
Offshore Structural Engineering	38	Strategic Studies	42
Oil and Gas Chemistry	36	Strategic Studies and Energy Security	42
Oil and Gas Engineering	38	Strategic Studies and International Law	40/42
Oil and Gas Enterprise Management	39	Strategic Studies and Management	42
Oil and Gas Law with Dissertation	40	Stratified Medicine and Pharmacological Innovation	36
Oil and Gas Law with Professional Skills	40	STREAP (Gaelic Medium Education)	37
Oil and Gas Structural Engineering	38	Studies in Mindfulness	37
Osteoarchaeology	35	Subsea Engineering	38
Pastoral Care, Guidance and Pupil Support	37	Teaching Qualification Further Education	37
People and the Environment	35	TESOL	41
Person-Centred Counselling	37	Translation Studies	41
		Vocal Music	42

“The University of Aberdeen provided me with connections to key industry players, which enabled me to gain a greater insight when choosing my first job. I had the opportunity to acquire technical, analytical and business skills, as well as gain a deeper understanding of the capital market world, understand clients, and adapt to challenging situations.”

**Lynette Otiti**  
MSc Finance and  
Investment Management

# OPEN DAYS

Wed 14 November 2018

For 2019 dates and more information please visit:  
[abdn.ac.uk/pgopenday](http://abdn.ac.uk/pgopenday)

Every effort has been made to ensure the accuracy of the information contained within this guide but it is subject to alteration without notice. The University reserves the right to make variations to the contents or methods of delivery of courses, to discontinue programmes and courses and to merge and combine them. The University is constantly developing new programmes, so please visit our website for new programmes developed for entry in 2019.

1495



UNIVERSITY OF  
ABERDEEN

University of Aberdeen  
King's College  
Aberdeen  
AB24 3FX

Tel: +44(0)1224 272090

 @universityofaberdeen

 @aberdeenuni

 @uniofaberdeen